

HDCi® MLX3 MTP®/MPO Cassette Module

HDCi® MTP®/MPO cassette modules designed and manufactured for the transition between MTP®/MPO and standard LC or SC connectors. They can be mounted on 1U, 2U, 3U or 4U 19" rack mounted chassis.

These cassette modules are used to interconnect MTP®/MPO backbone cabling with LC or SC patching. They contain factory tested and terminated MTP®/MPO to LC fanouts with low loss and reliable results.

The HDCi® MLX3 MTP®/MPO modules which are compatible with LX3 panel are designed for the transition between MTP®/MPO and standard LC connectors. They have a small form factor design. They come with 6 low loss LC quad or SC Duplex flangeless adaptors on the front and 2 MTP®/MPO on the back side. They contain 100% factory terminated and tested LC or SC to MTP®/MPO fanouts.

The combination of LX3 panel and MLX3 cassette modules is an ideal solution for high density applications. Their plug and play design meets all requirements for rapid deployment in high demand data centre environments.

Features

- MTP®/MPO multi-fibre connector
- Low loss zirconia sleeve LC or SC adaptors
- Available with OM3, OM4, OM5, OS1/OS2 fibre types
- 12 and 24 fibre versions with 6 low loss LC Quad or SC Duplex
- Option for A, B or C polarity
- 100% factory terminated and tested
- High density solution – Up to 576 LC connectors in 4U chassis
- Saves installation and reconfiguration time

Applications

- Data Centres
- Parallel optics applications
- Storage Area Network - Fibre Channel

Specifications

| ELEMENT | CHARACTERISTIC |
|--------------------------|-----------------------------------------------------------------------------------------------------------------------------------------------------------------------------------|
| Fibre | OS1/OS2, OM3, OM4, OM5 (ISO/IEC 60793) |
| Fibre Count | 12, 24 |
| Polarity | A (default), B or C |
| MTP® Adaptors | US Conec (IEC-61754 & EIA/TIA-604-5) Body Colour: Black Polarity: A/C - Keyway up - Key way down Body Colour: Grey Polarity: B - Keyway up- Keyway up |
| LC Adapter | Body Colour: Aqua (MM)(OM3/OM4), Lime Green (OM5), Blue (SM/UPC), Green (SM/APC) Sleeve Material: Zirconia |
| Terminations | MTP®/MPO Standard (12 Fibre Ferrule) MTP®/MPO Low Loss Elite (12 Fibre Ferrule) LC Standard LC Low Loss Premium |
| Connectivity Config. | 1x 24F and 2 x 12F |
| Storage Temperature | -20 ~ +60°C |
| Installation Temperature | -20 ~ +60°C |
| Operating Temperature | -20 ~ +60°C |
| Size | 136*61*36mm |

MTP® Connector Performance

| CONNECTOR MATING | IL AVERAGE | IL MAX | RETURN LOSS |
|------------------|------------|--------|-------------|
| MTP® Elite (MM) | 0.10dB | 0.35dB | N/A |
| MTP® (MM) | 0.20dB | 0.60dB | N/A |
| MTP® Elite (SM) | 0.10dB | 0.35dB | >60dB |
| MTP® (SM) | 0.25dB | 0.75dB | >60dB |

LC Connector Performance

| OPTICAL PERFORMANCE* | MULTIMODE | SINGLEMODE | CONFORMANCE |
|----------------------|-----------|------------|---------------|
| Insertion Loss | ≤0.20dB | ≤0.20dB | IEC 61300-3-4 |
| Return Loss | - | ≥50dB | IEC 61300-3-4 |

Standards Compliance

- TIA/EIA-568-C.3 and ISO/IEC 11801 - cable
- IEC-61754-7 & EIA/TIA-604-5 - MTP®/MPO
- Compliant to Directive 2002/95/EC (RoHS) and REACH SvHC
- IEC-61754-20 (LC) & IEC-61754-14 (SC)
- IEC-60793

Ordering Information

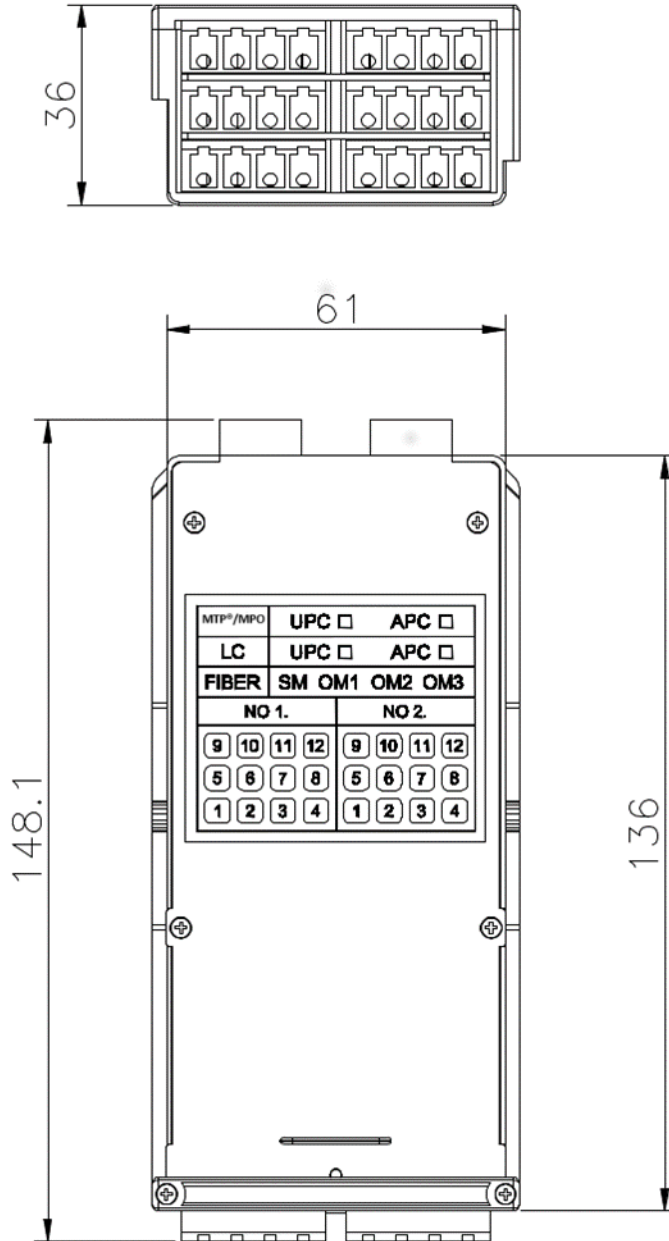
| | Connectivity Config. | | Connector A | | Connector B | | Fibre Type | | Adaptor Configuration | | Adaptor Count | | Polarity | |
|-------|----------------------|---------|-------------|-----------------|-------------|-----|------------|---------|-----------------------|--------|---------------|----|----------|------------|
| | | | | | | | | | | | | | | |
| OMLX3 | 2 | 1 x 24F | 0 | MTP® Male | 00 | LC | 9 | G.652.D | 4 | Quad | 6 | 6 | A | Polarity A |
| | 1 | 2 x 12F | 4 | MTP® Male Elite | 01 | LCA | 3 | OM3 | 4 | Quad | 6 | 6 | B | Polarity B |
| | | | 1 | MPO Male | 02 | SC | 4 | OM4 | 2 | Duplex | 8 | 12 | C | Polarity C |
| | | | 5 | MPO Male Elite | 03 | SCA | 5 | OM5 | 2 | Duplex | 8 | 12 | | |

Example order code

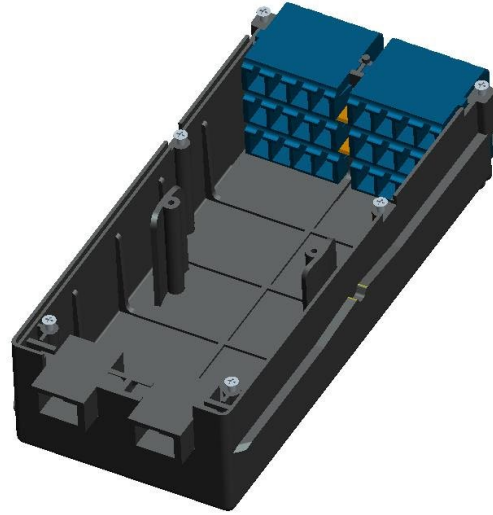
OMLX3 - 2000346 - A

LC to MTP® Male MLX3 HDCi® Cassette Module with 6 LC Quad OM3 Aqua Adaptors Polarity A

Technical Drawing



Additional Images



MTP® is a registered trademark of US Conec Ltd.