

UHDCi® LX4 High Density 2U Patch Panel

An innovative 2U 19" rack mountable LX4 UHDCi® patch panel, designed for use in ultra high density applications. It offers management of up to 576 fibres using SN®/MTP® optical cassette modules with 2x24 fibres and it's fully compatible with a variety of alternative Ultra HDCi® module options. This panel allows advanced cable management, providing an enhanced cable routing exiting the panel to the left or right and allowing cable assemblies to be routed up and across the front of the panel.

SN® connector is a next generation, new duplex connector, optimised for 400G Data Centre applications. The MLX4 UHDCi® SN®/MTP® modules which are compatible with LX4 panel are designed for the transition between SN®/MTP® and standard SN® connectors. They have a small form factor design and LX4 panel can house up to 12 MLX4 modules. They come with 6 low loss SN® quad flangeless adaptors on the front and 2 SN®/MTP® on the back side. They contain 100% factory terminated and tested SN® to SN®/MTP® fanouts.

The combination of LX4 panel and MLX4 cassette modules is an ideal solution for Ultra high density applications. Their plug and play design meets all requirements for rapid deployment in high demand data centre environments.

Features

- 1Uheight
- 19" rack mountable
- Metal construction
- Can house up to 12 MLX4 modules allowing management for up to 576 fibres
- Compatible with multiple Ultra HDCi® module options (SN®/MTP®, SN® 4CH (8F) adaptors, etc.)
- Saves installation and reconfiguration time
- MLX4 SN®/MTP® cassette modules are 100% factory terminated and tested offering low loss performance

Applications

- Data centres
- Ultra High density applications
- Telecommunication networks
- Enterprise Networks
- Central Offices

Specifications

Patch Panel Specification

ELEMENT	2U
Depth (mm)	420mm
Width (mm)	437mm
Height (mm)	88.7mm
Rack Units	2U
Capacity	12 x Ultra HDCi® type modules

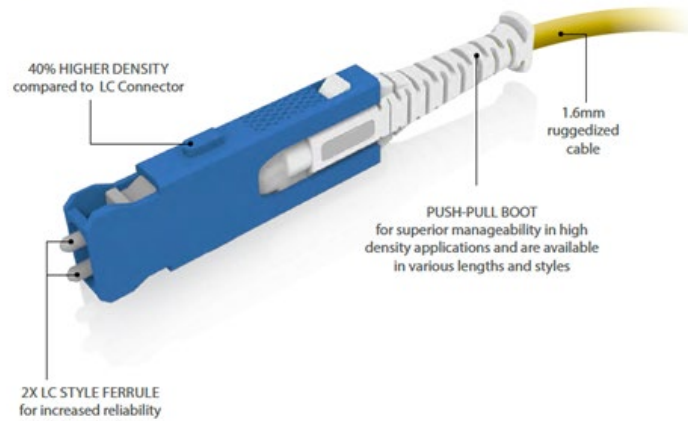
MPO®/MTP® Connector Performance

CONNECTOR MATING	IL AVERAGE	IL MAX	RETURN LOSS
MPO/MTP® Elite (MM)	0.10dB	0.35dB	N/A
MPO/MTP® (MM)	0.20dB	0.60dB	N/A
MPO/MTP® Elite (SM)	0.10dB	0.35dB	>60dB
MPO/MTP® (SM)	0.25dB	0.75dB	>60dB

SN® Connector Performance

Next generation connector

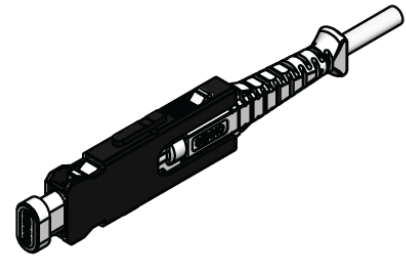
New Duplex connector optimized for 400G new generation Data Center



SN® 1.6mm standard connector has been designed and optimised for 400G new generation Data Centre applications and has been adopted to transceiver applications including QSFP-DD. The duplex design utilizes a unique Push-Pull boot for superior manageability and simple installation and removal from transceivers and adapter panels.

Features

- Accepts up to 1.6mm fibre
- Very Small Form Factor (VSFF)
- Uses proven LC ferrule technology
- Exceeds GR-326-CORE requirements

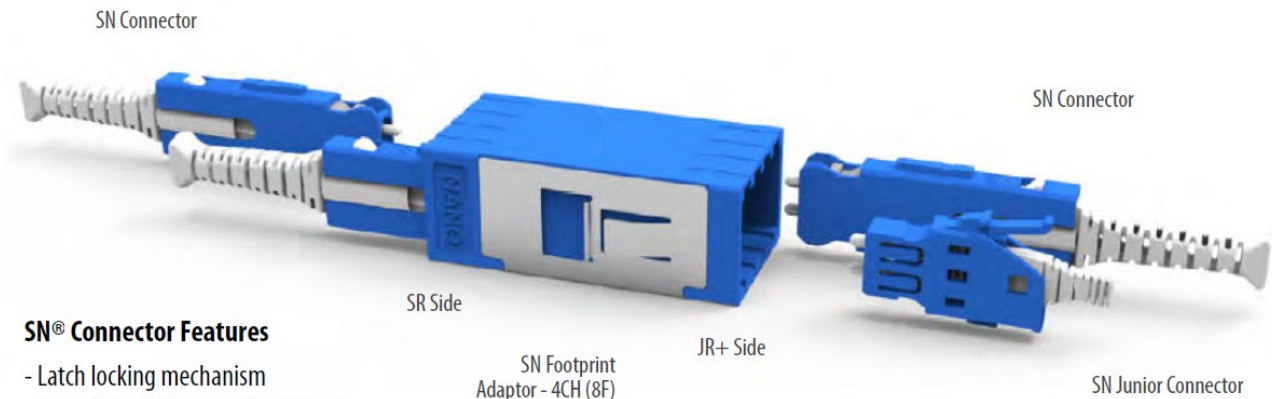


SN® Connector Performance

PARAMETERS	MULTIMODE		SINGLEMODE		
	MM	UPC		APC	
		SN® Elite (SM)	SN® (SM)	SN® Elite (SM)	SN® (SM)
Typ. Insertion Loss *	0.05dB	0.05dB	0.08dB	0.07dB	0.12dB
Max. Insertion Loss *	0.15dB	0.15dB	0.20dB	0.15dB	0.25dB
Typ. Return Loss	≥25dB	≥55dB		≥65Db	
Operating Temperature (°C)	-40 to +75				
Durability	<0.2dB typical change, 500 matings				
Ferrule Ø	127µm				125µm

* Per random mating testing IEC 61753-1

SN® Adaptor



SN® Connector Features

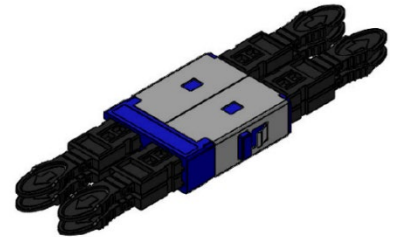
- Latch locking mechanism
- Accepts 2 x 900 µm buffered fibers
- Uses proven LC ferrule technology
- Extra small for space limited installations

Note: The JR+ side of the adaptor can accept the SN Connector and the SN Junior Connector

SN® Standard Adaptors allow for panel connectivity of SN® connectors. Adaptors are designed to fit into standard SC and SC duplex panel cutouts for simple integration to existing panels.

Features

- Standard SC and unique SN footprints
- Telcordia, ANSI, TIA and IEC Compliant
- Mates SN standard, junior and compact connectors

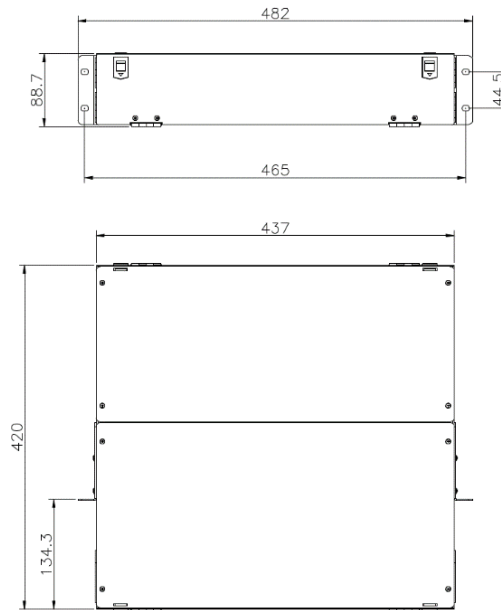


SN® Adaptor Performance

DESCRIPTION	CERAMIC
Typ. Insertion Loss *	0.10dB
Max. Insertion Loss *	0.20dB
Humidity Resistance	95%
Durability	200 matings per GR-326-Core
Operating Temperature	-40°C to +75°C

* Based on Master Grade jumper to Low Loss random mating test

Panel Specifications & Technical Drawing



Ordering Information

LX4 Patch Panel

DESCRIPTION	PART NUMBER
OptronicPlus Ultra HDCi® LX4 High Density 2U Patch Panel Unloaded	OPPLX4-XX-XX-UL-2

Ultra HDCi® MLX4 MPO/MTP® Cassette Module

	Connectivity Config.		Connector A		Connector B		Fibre Type		Adaptor Configuration		Adaptor Count		Polarity	
	4	2 x 24F	0	MTP® Male	9	SN® UPC	9	G.652.D	4	Quad	6	6	A	Polarity A
OMLX4			4	MTP® Male Elite	10	SN® APC	3	OM3	4	Quad	6	6	B	Polarity B
			1	MPO Male	11	SN® UPC Elite	4	OM4	2	Duplex	8	12	C	Polarity C
			5	MPO Male Elite	12	SN® APC Elite	5	OM5	2	Duplex	8	12		

Example order code

OMLX4	-	4	0	09	9	46	-	A
-------	---	---	---	----	---	----	---	---

OptronicPlus SN® to 2 x MTP® 24F Male MLX4 HDCi® Cassette Module with 6 SN® (SC Duplex footprint) Quad SM Blue Adaptors Polarity A

MTP® is a registered trademark of US Conec Ltd
 SN® is a registered trademark of Senko Advance Co., Ltd.